

Remote Capture Scanner Installation Guide: Panini EverneXt Scanner

Welcome to Remote Capture.

This guide will walk you through the necessary steps to prepare your system and install your Panini EverneXtscanner. Please first use this Scanner Installation Guide and then, refer to the Remote Capture User Guide if you have specific questions for processing your work. For others scanners, refer to the Remote Capture Installation Guide.

Before You Begin

This guide provides step-by-step instructions to assist you with connecting your Panini EverneXt scanner to your computer and installing the necessary software. This guide is intended for Windows operating systems only. For additional assistance and troubleshooting, please refer to the user guide included with your Panini EverneXt.

The instructions in this guide were documented using Windows 10 and Windows 11 operating systems. Some steps, wording, and visuals may be slightly different if you have a different Windows operating system.

We recommend that you confirm the following before installing your scanner:

Supported Operating Systems & Browsers:

Please ensure that your browser version meets the minimum supported version:

- Google Chrome: v111
- Mozilla Firefox: v110 (Win 10), v111 (Win 11)
- Microsoft Edge: v110

Visit the [Remote Capture Resource Center](#) for more information.

Your Company's Policies

Downloading and installing the scanner's software may require special permissions depending on your company's policies. Please ensure you have administrative rights to install software on your PC before beginning.

All of the software needed to install your Panini EverneXt scanner should be automatically downloaded by your scanner by following the steps provided in this document and on the Receivables Online application.

You can also find the necessary software on the [Remote Capture Resource Center](#).

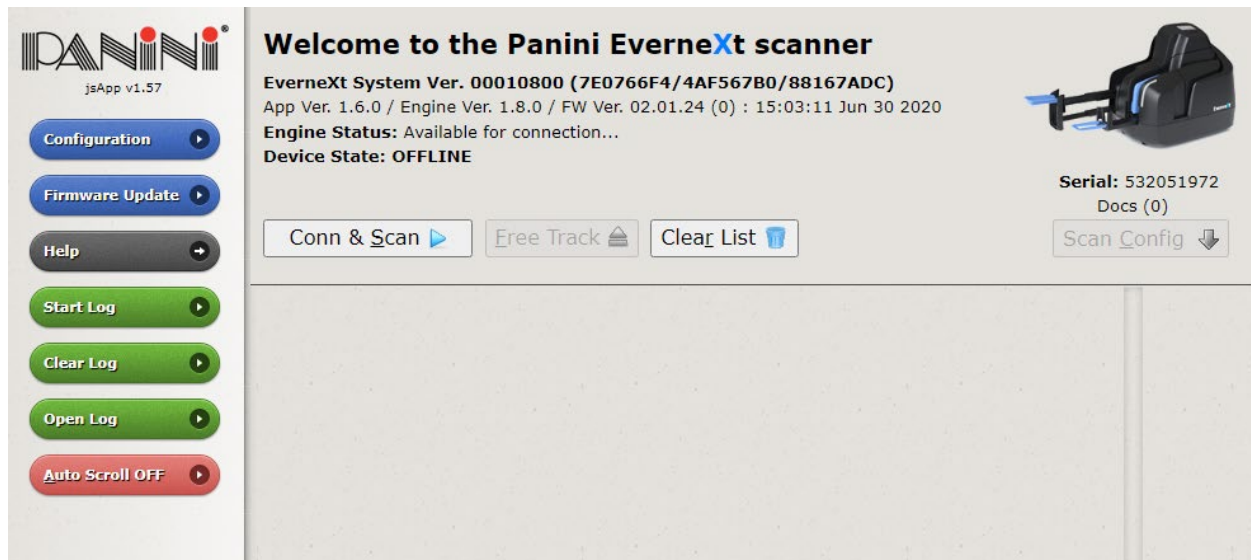
Preparing Your Work Area

- It is very important that you download the scanner software **before** you plug the scanner into a power source.
- Place the scanner at least 18 inches from any device that may create interference (e.g., fans, heaters, computer monitors, CPUs).
- Uninstall any software currently on your computer that allows you to scan paper checks as it may interfere with your new scanner causing operational difficulties.

Set Up Your Scanner

Connecting your Scanner to the Computer

1. Connect your scanner
 - a. Connect the EverneXt USB cable to the back of the scanner, and then to an available USB port on your machine
 - b. Connect the EverneXt power cable to the back of the scanner, and then into an available power outlet
2. Press the power button on the scanner
3. Wait for the display to turn from green to blue
4. Your Panini EverneXt should automatically download the necessary driver
 - a. Open a browser
 - b. Enter <https://192.168.101.1> into the URL bar and press enter
 - c. You should be taken to the Panini EverneXt homepage



If you see the homepage, you have successfully installed the scanner and can now use it with Receivables Online. If you cannot access <https://192.168.101.1>, continue to step 5.

If any of the following apply to you, skip to step 15:

- You are unable to scan via the Receivables Online application
- You receive a “Connection Not Private” warning (similar to below)



Your connection is not private

Attackers might be trying to steal your information from 192.168.101.1 (for example, passwords, messages, or credit cards). [Learn more](#)

NET-ERR_CERT_AUTHORITY_INVALID

To get Chrome's highest level of security, [turn on enhanced protection](#)

Advanced

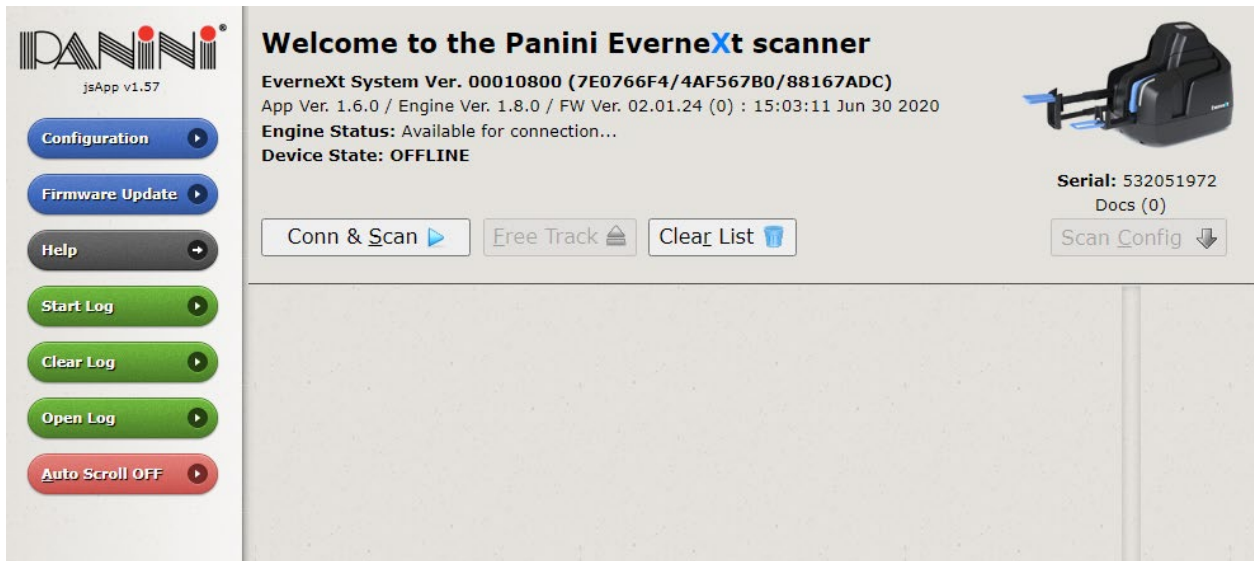
Back to safety

Enabling HTTPS for your scanner

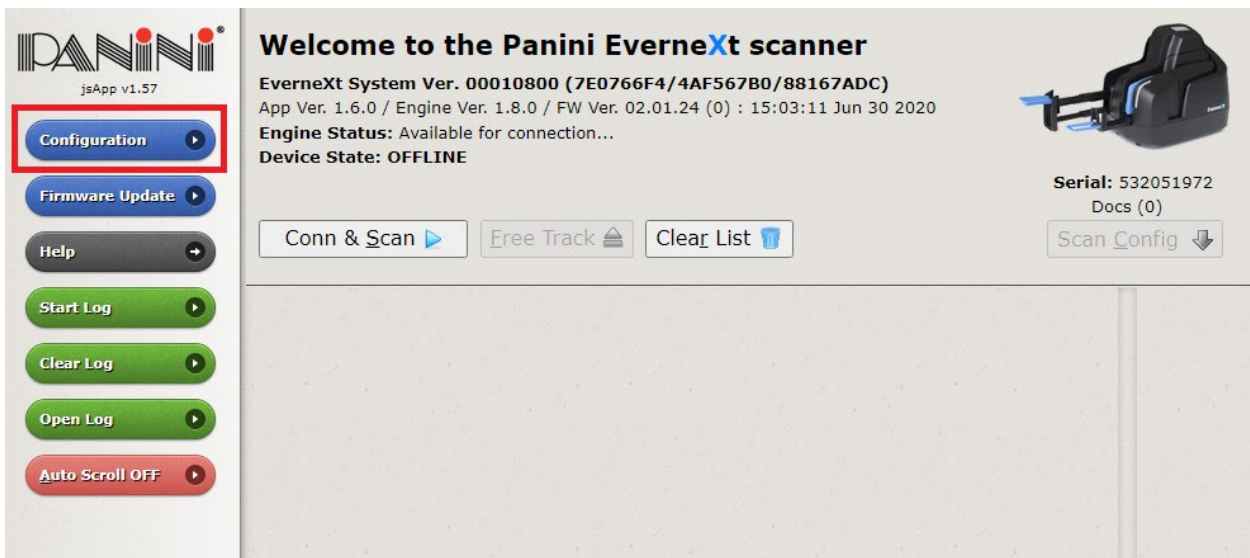
5. See your scanner's display to find its IP address and whether it uses HTTP or HTTPS
6. Enter the corresponding values into your browser's URL bar
 - a. If your scanner says HTTP and its IP address is 192.168.101.1, then you will navigate to <http://192.168.101.1>



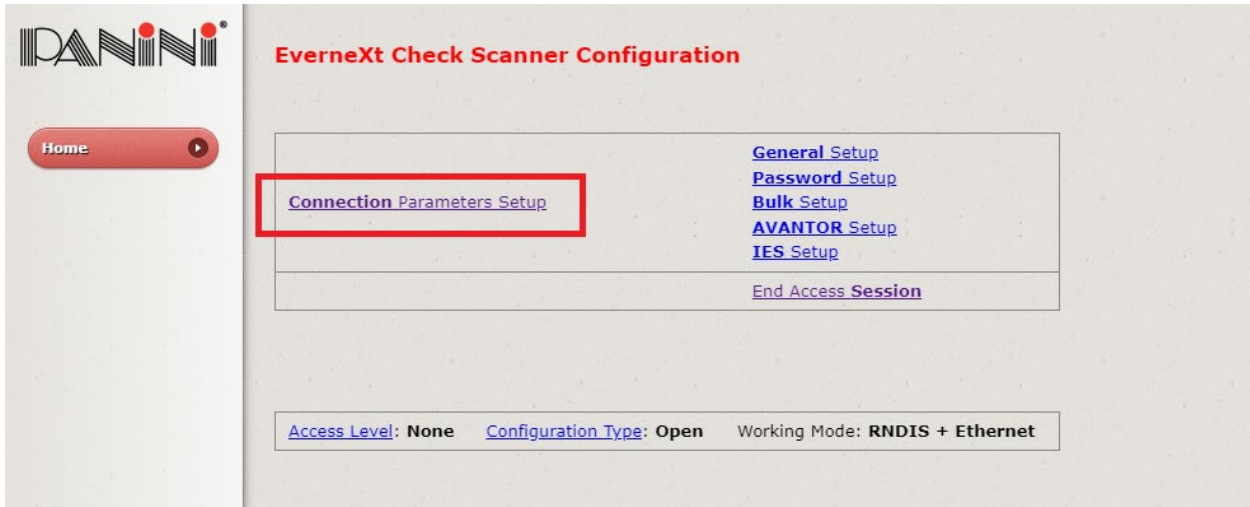
You should be taken to the scanner homepage (seen below). If you are still unable to access the homepage, skip to step 15. Otherwise, continue to step 7.



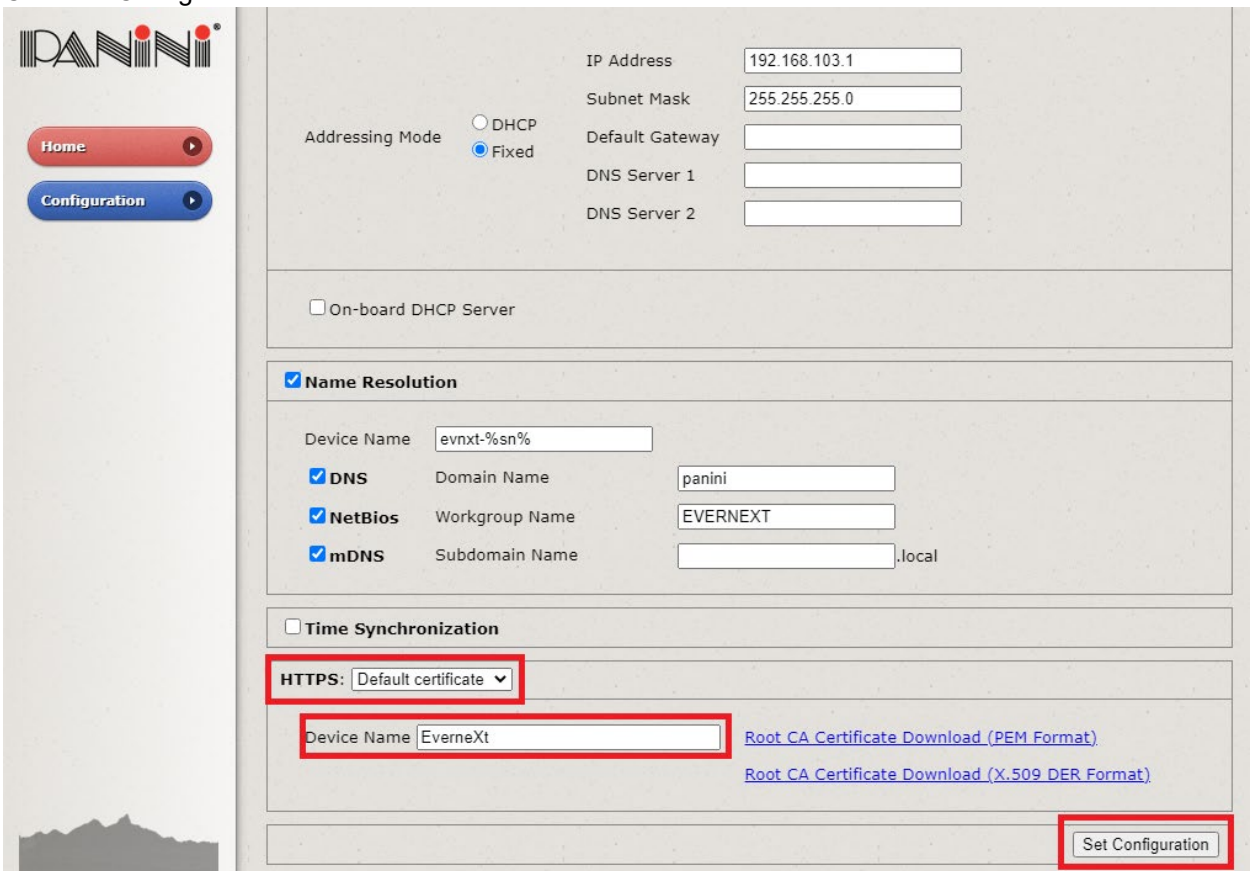
7. Click on **Configuration**



8. Click on **Connection Parameters Setup**



- 9. Click **Next**
- 10. At the bottom of the page, click the HTTPS dropdown
- 11. Select Default Certificate
- 12. Provide a device name (ex. 'EverneXt')
- 13. Click Set Configuration



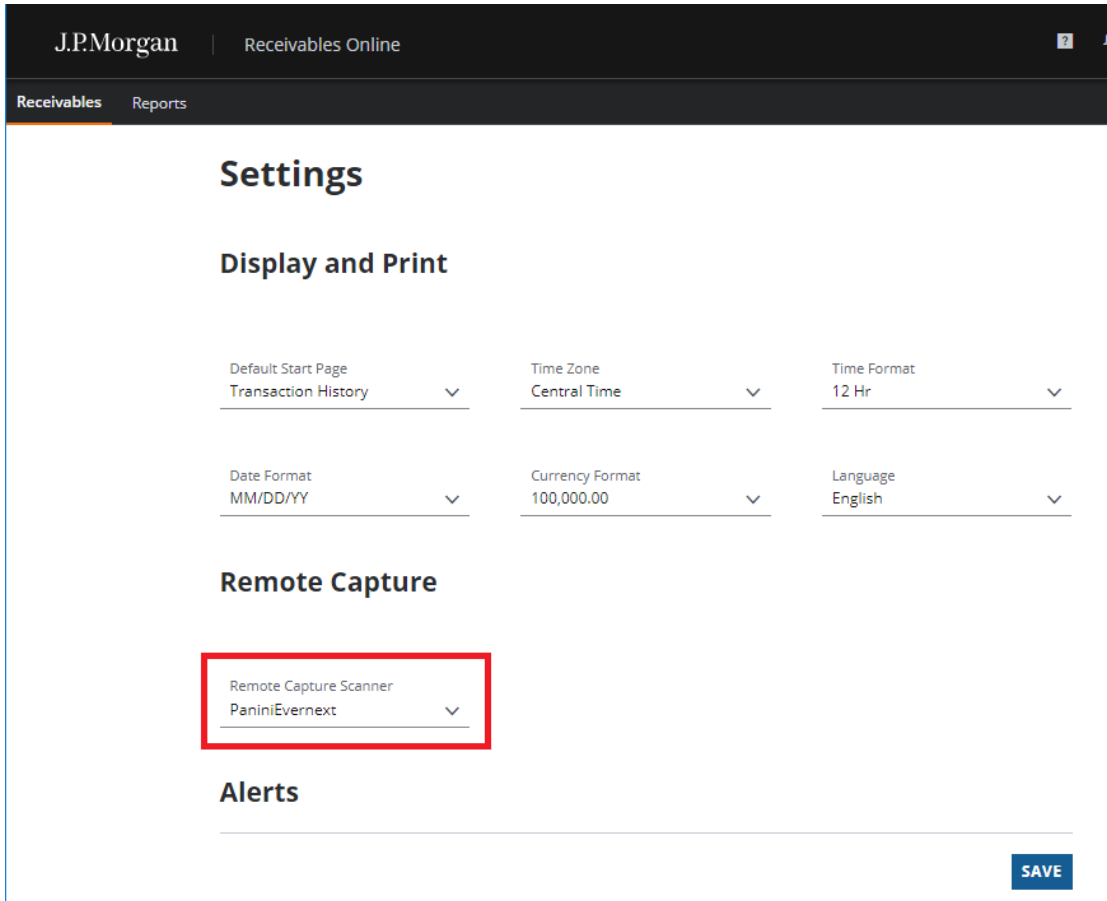
14. Turn your scanner off and on again

Your scanner is now HTTPS enabled. If you are still unable to scan in Receivables Online, continue to step 15. Otherwise, your installation is complete.

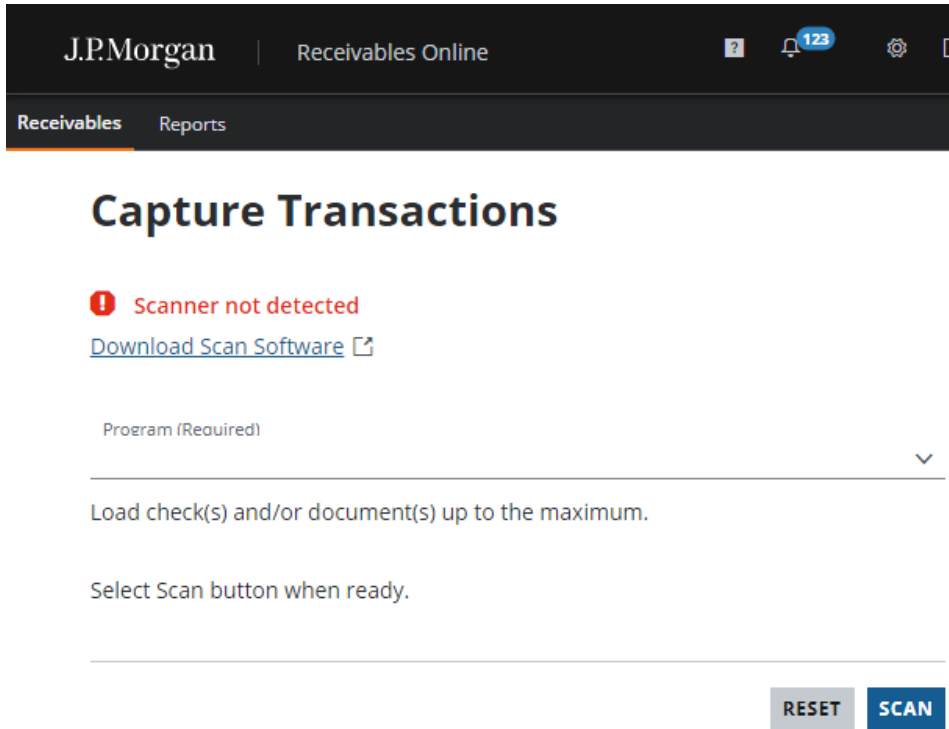
Manually Installing the Panini EverneXt USB Driver

Note: You must have administrative rights in order to download the Panini EverneXt USB Driver. Please contact your system administrator if you do not have permission.

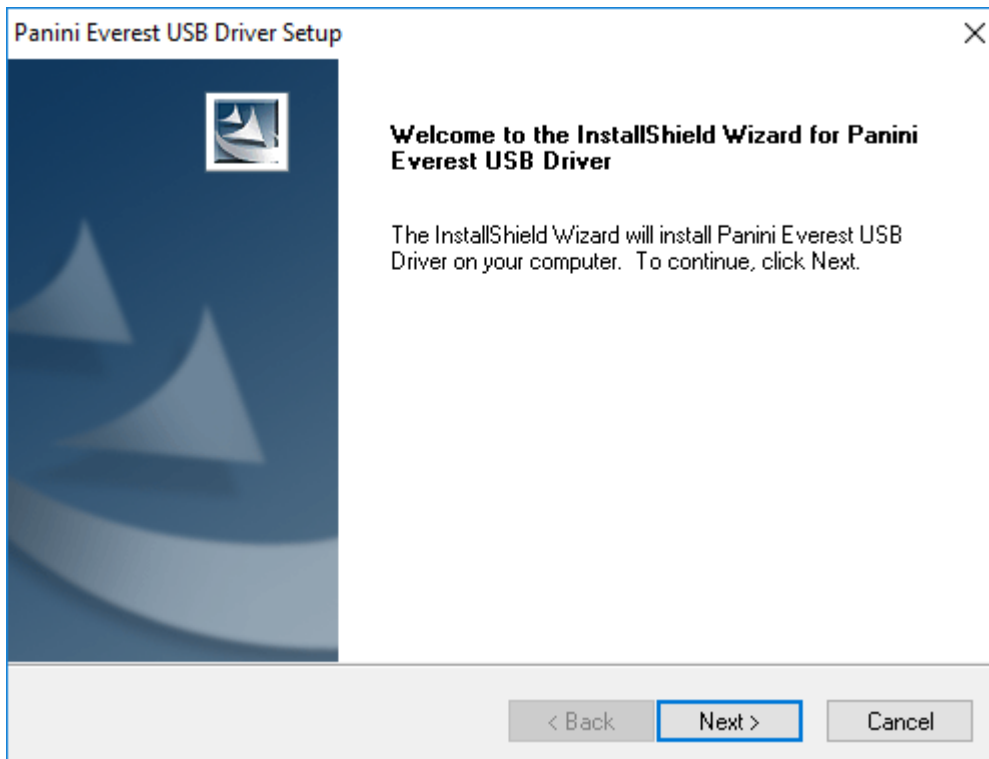
15. Sign into the Receivables Online application
16. Ensure that your Remote Capture Scanner is PaniniEvernext
 - a. Navigate to Settings page
 - b. Select PaniniEvernext under the Remote Capture Scanner dropdown
 - c. Click Save



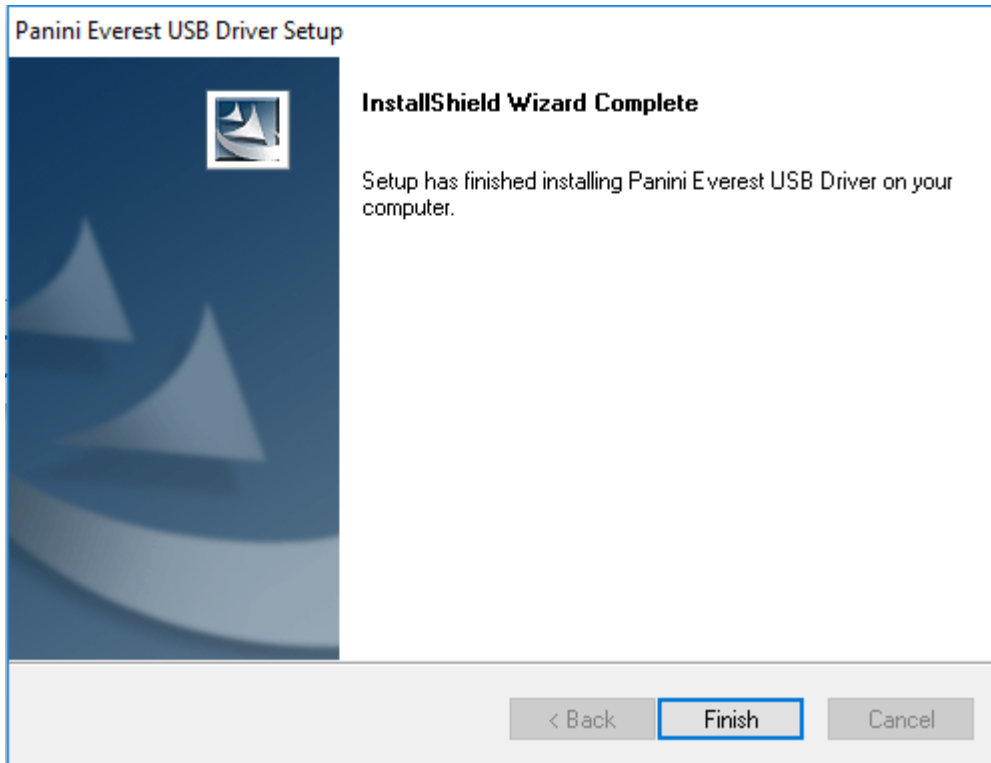
17. Navigate to the Capture Transactions page
18. Wait a few seconds for “Scanner not detected” message to appear



19. Click on the “Download Scan Software” link
 - a. Note: the downloaded file will say Panini Everest – this is correct
20. Double click the *Panini Everest USB Driver Setup (3.25.2).exe* file to open the installation wizard
 - a. Note: If you already have a version of the Panini driver installed, it will ask you to uninstall. Proceed and repeat step 20 after uninstalling.
21. Press Next



22. Press Finish



If your installation was successful, you can now return to the Capture transactions page and reload the page. The “Scanner not detected” message should not appear.

Scanning in Receivables Online

- 23. Navigate to Capture Transactions
- 24. Load checks into the Panini EverneXt feeding tray
- 25. Select a program under the "Program" dropdown
- 26. Fill out all required fields
- 27. Press scan

Capture Transactions

Program (Required) 8885 - VPC RDC TEST	Capture Type (Required) Check(s) Only
Expected Total Checks	Expected Total Amount (###,###.##)
Batch Number <i>(if not entered, will be auto-generated)</i>	
Deposit Account 8701923781	Country UNITED STATES OF AMERICA
Currency USD	12:00 PM CST

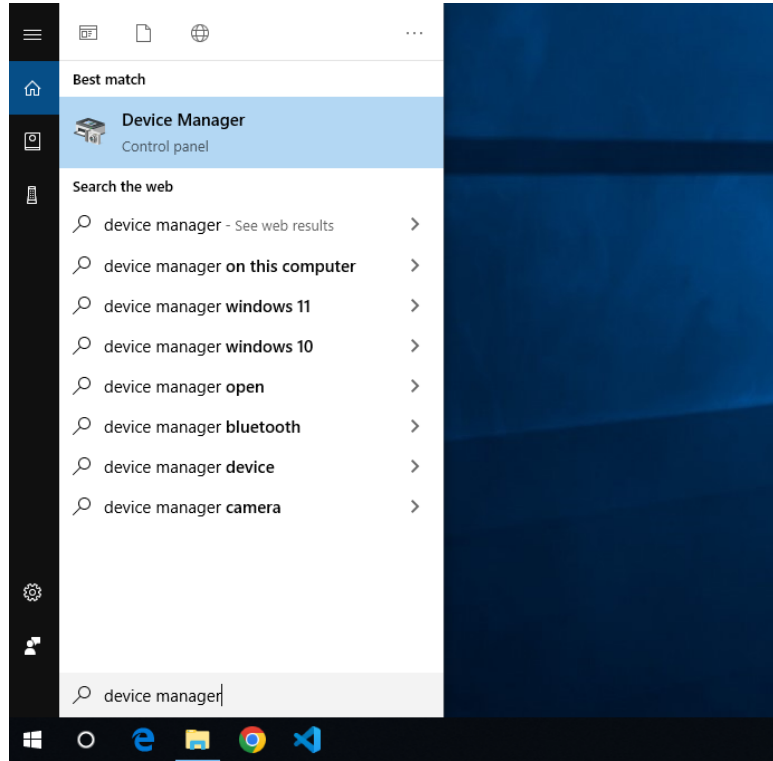
Load check(s) and/or document(s) up to the maximum.

Select Scan button when ready.

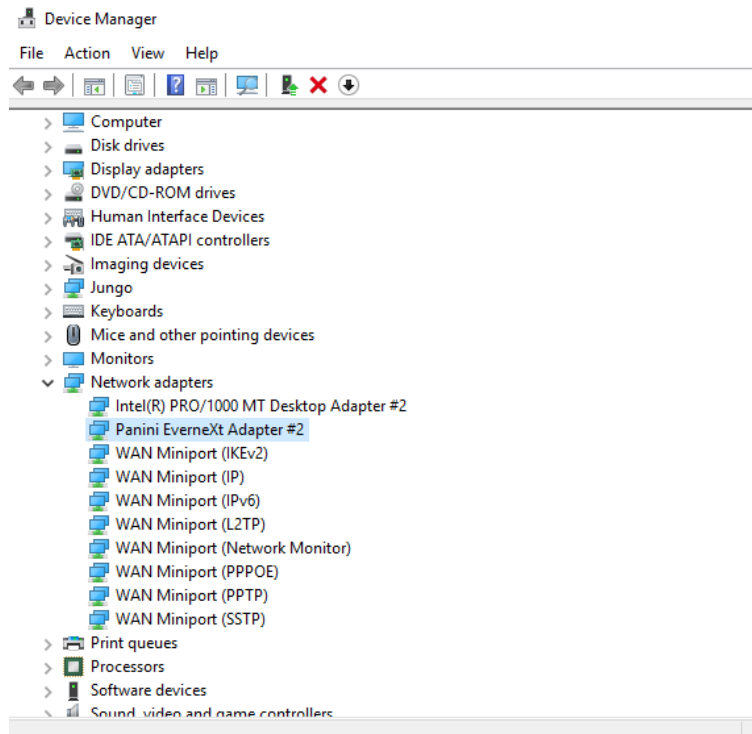
After a successful scan, you should be redirected to the Capture Details page.

Additional Troubleshooting Steps if Necessary

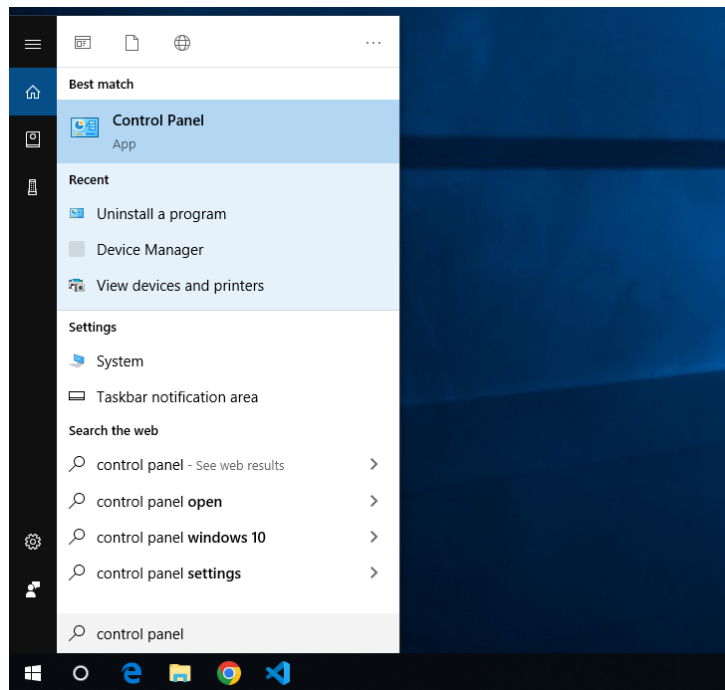
- After a successful installation, you should see “Panini EverneXt Adapter” under “Network Adapters” in the Device Manager.
 - Type “device manager” into the Windows search bar and press enter



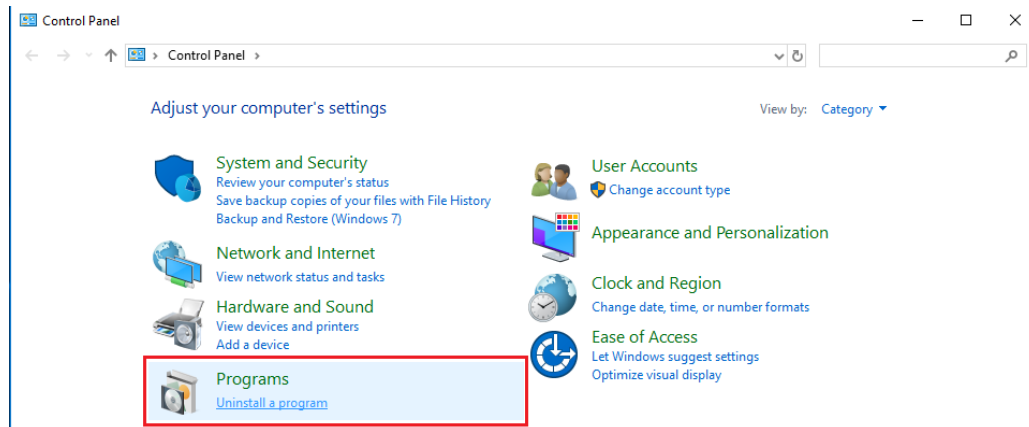
- Click on “Network Adapters”



- The Panini USB Driver can be uninstalled via Programs and Features in case you need to reinstall the driver.
 - Type “control panel” into the Windows search bar and press enter






- Under “Programs”, click on “Uninstall a program”



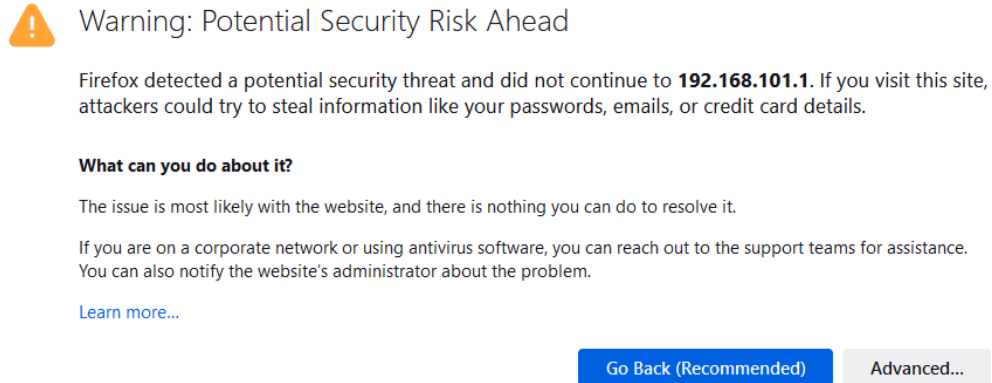
- Find “Panini Everest USB Driver” and double click it to uninstall

Uninstall or change a program

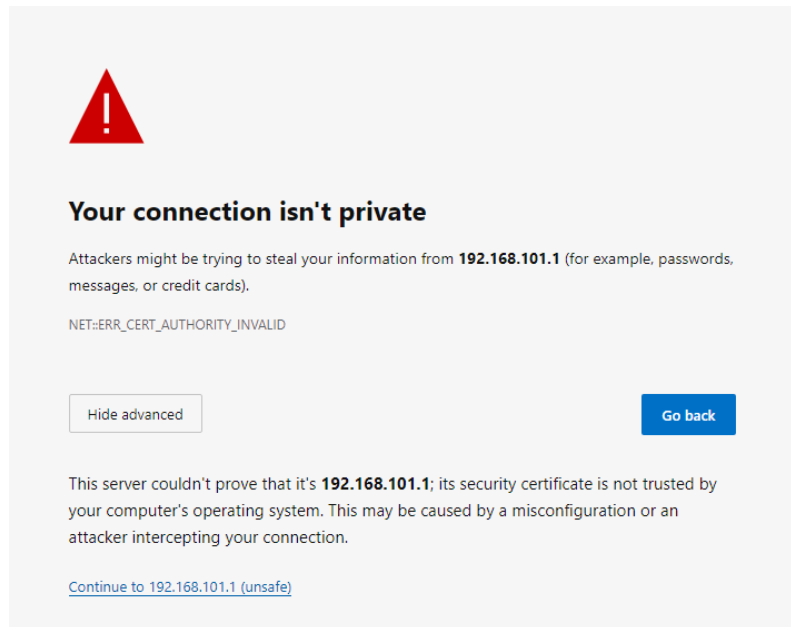
To uninstall a program, select it from the list and then click Uninstall, Change, or Repair.

Organize ▾ Uninstall		
Name	Publisher	Installed On
 Panini Everest USB Driver	Panini	6/13/2023
 Google Chrome	Google LLC	6/6/2023
 Mozilla Firefox (x64 en-US)	Mozilla	6/6/2023

- For Firefox users, you may encounter a screen that says “Warning: Potential Security Risk Ahead” when trying to access the scanner’s homepage (typically <https://192.168.101.1>).

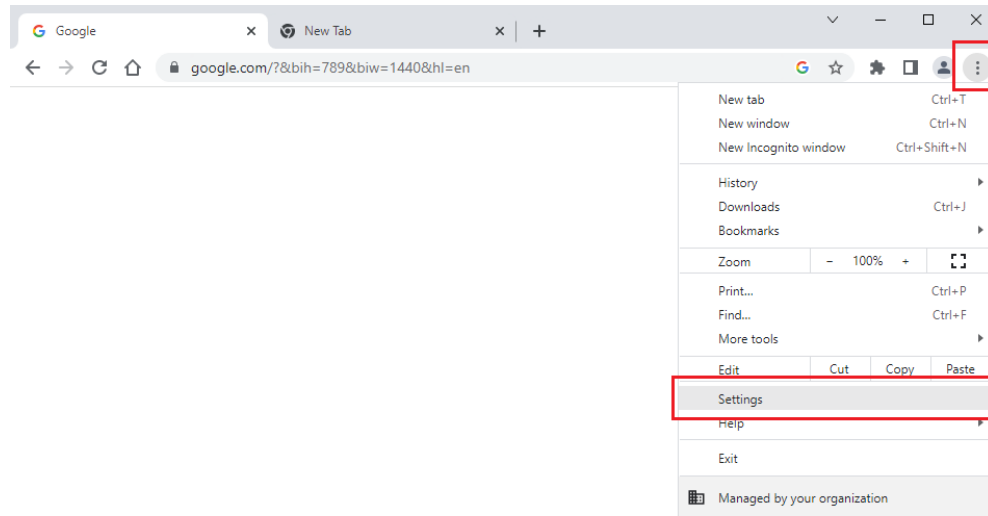


- In this case, you can click “Advanced...” and then “Accept the Risk and Continue” to continue to the scanner homepage. You can then continue to follow the steps in this guide.
- For Edge users, you may encounter a screen a screen that says “Your connection isn’t private” when trying to access the scanner’s homepage (typically <https://192.168.101.1>).

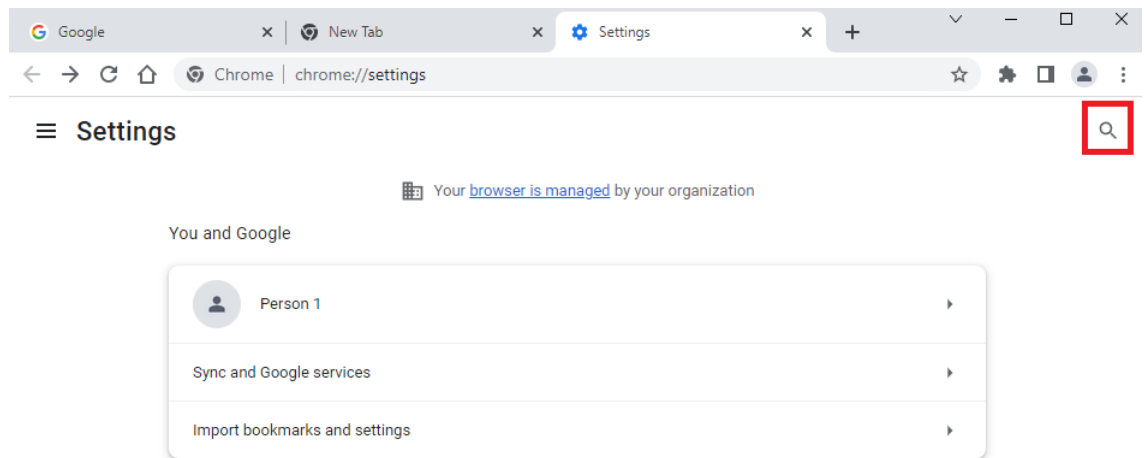


- In this case, you can click “Advanced...” and then “Continue to 192.168.101.1 (unsafe)” to continue to the scanner homepage. You can then continue to follow the steps in this guide.

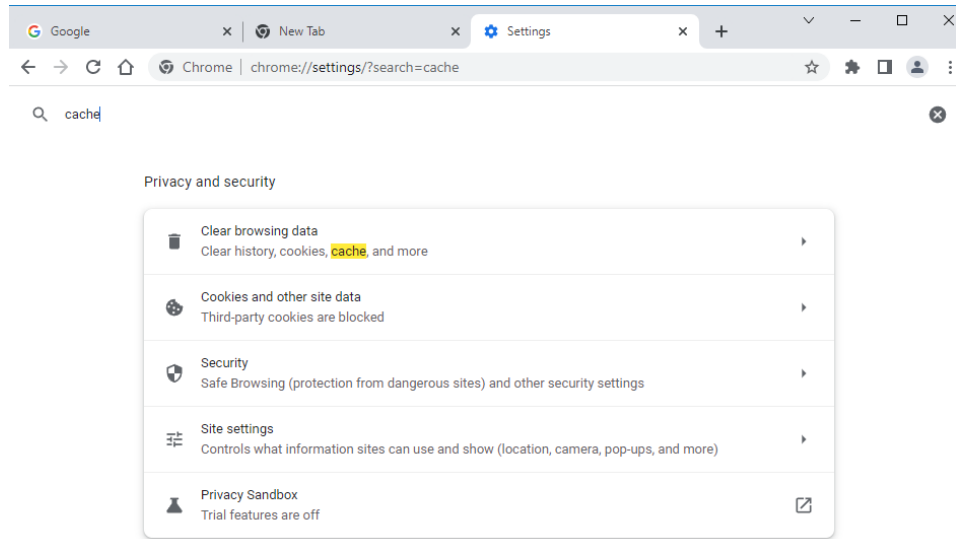
- Clearing your browser’s cache may fix some browser issues that persist even after following all possible steps
 - **Chrome**
 - Click the menu button and then click “Settings”



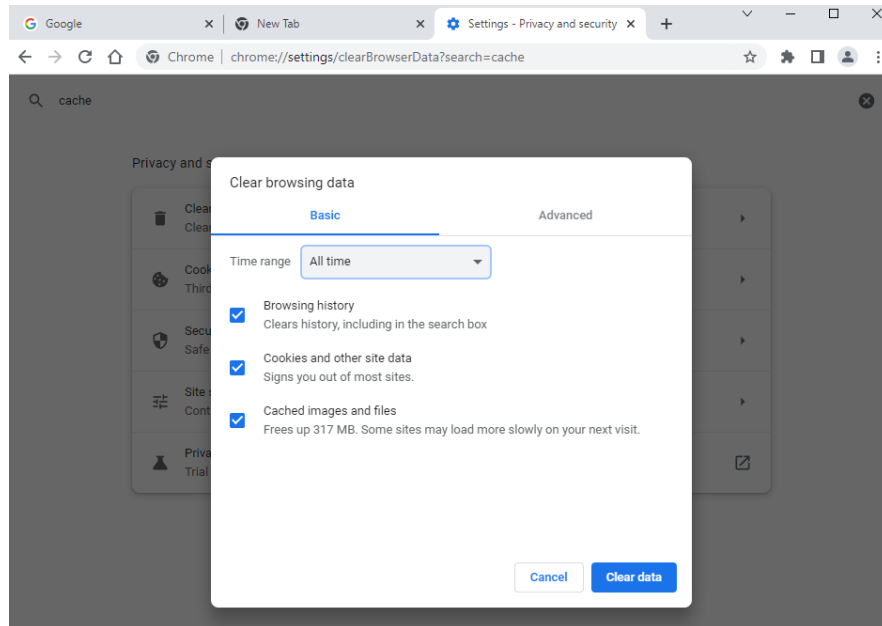
- Click the magnifying glass icon and search for “cache”



- Click “Clear browsing data”

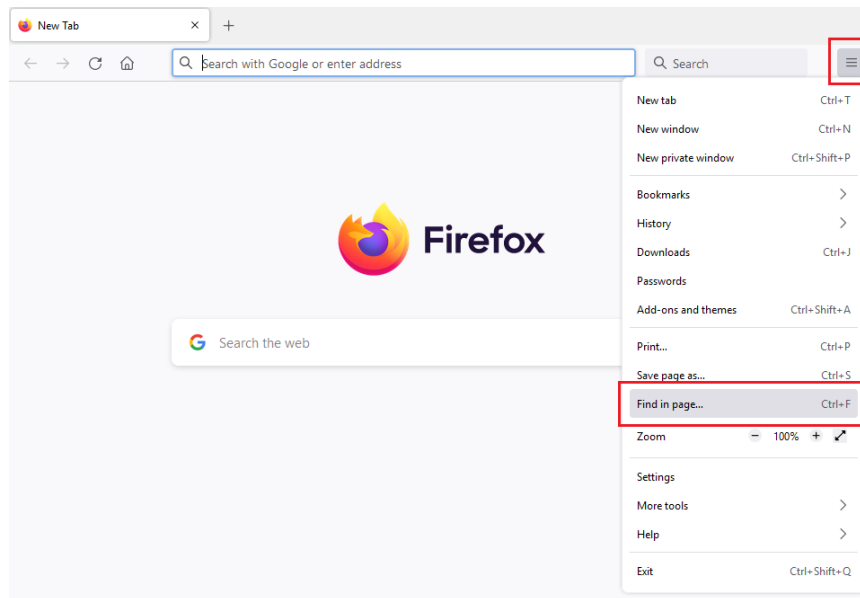


- Set the time range to “All time” and select all checkboxes, then click “Clear data”

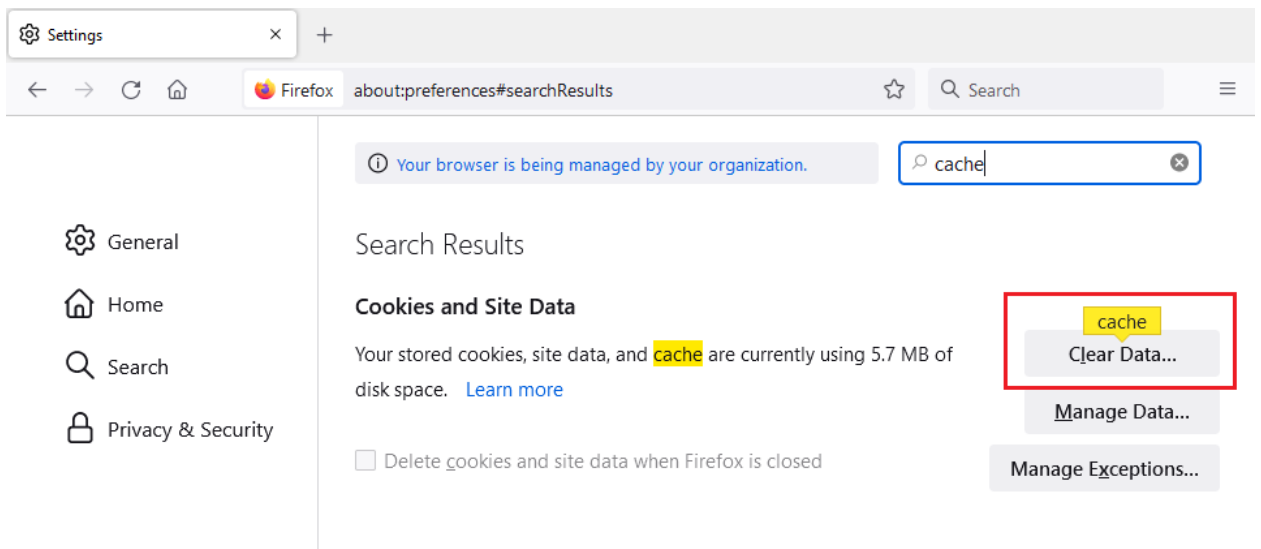


- **Firefox**

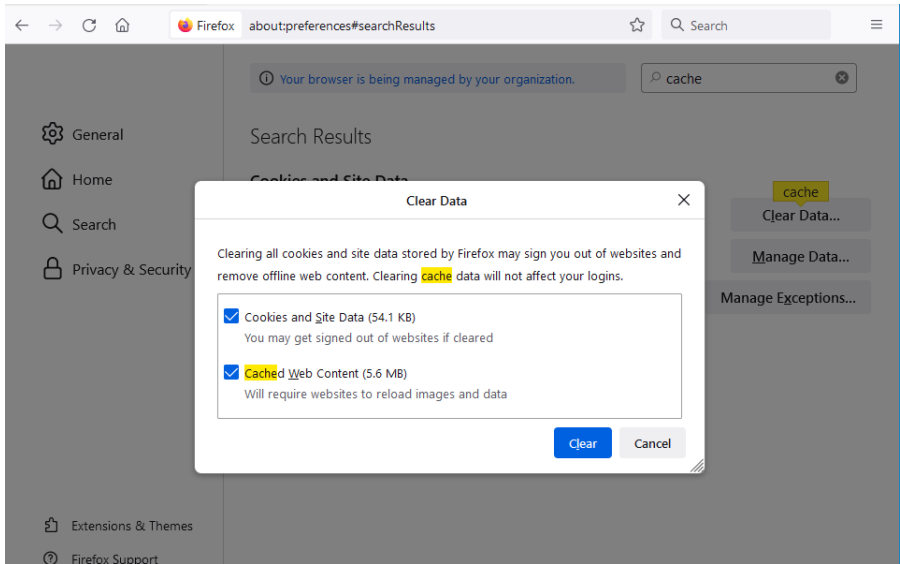
- Click the menu button and then click “Settings”



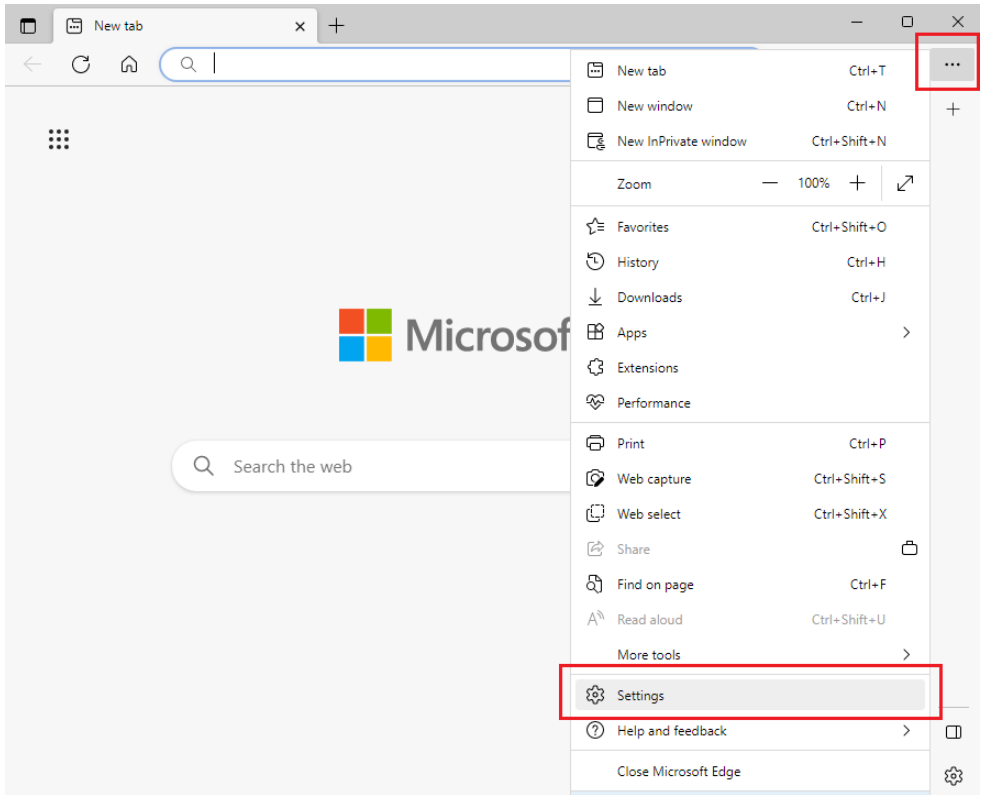
- Enter “cache” into the search bar
- Click “Clear data”



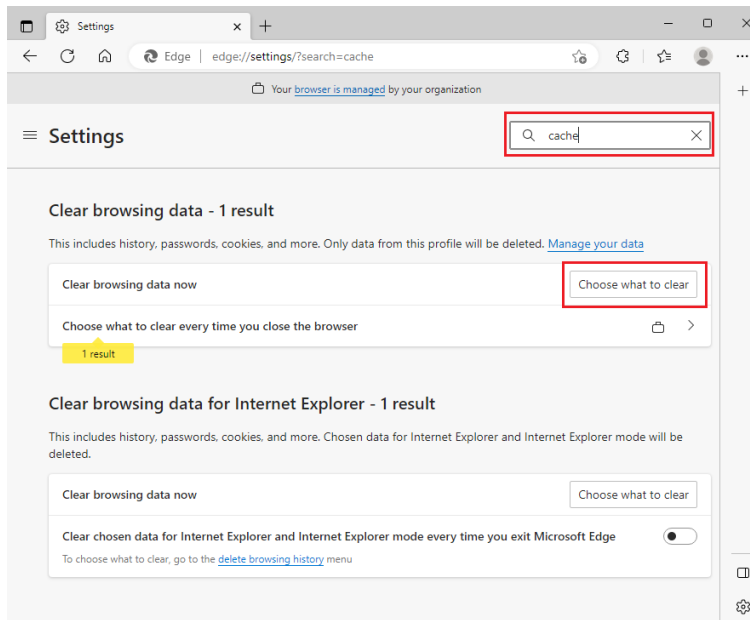
- Select all checkboxes and click “Clear”



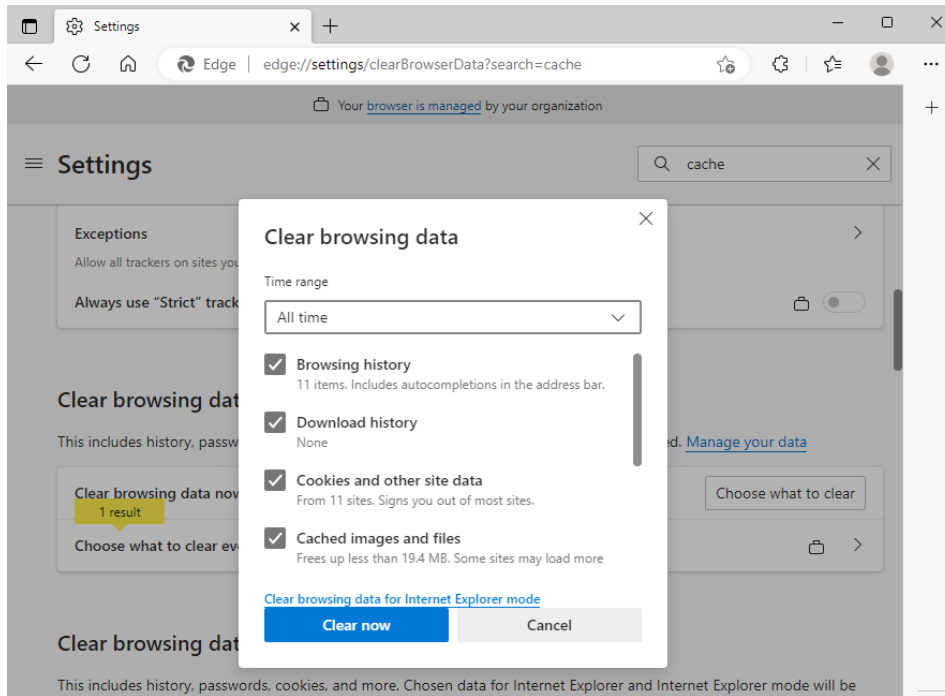
- o **Edge**
 - Click the menu button and then “Settings”



- Enter “cache” into the search bar
- Click “Choose what to clear”



- Set the time range to “All time” and select the “Browsing history”, “Download history”, “Cookies and other site data”, and “Cached images files” checkboxes



- Click “Clear now”